



Citizens Facility Planning Committee #2

NOVEMBER 09, 2021

MEETING AGENDA



Open Meeting and Welcome

Mrs. Brenda Sanford, Superintendent of Schools

Review of District CTE Programs

Mrs. Brenda Sanford, Superintendent of Schools

Table Discussion & Report on Tour

Corgan

Playgrounds, PE and Extra Curricular

Mr. Kevin Freels, District Operations

Red Oak ISD Maintenance Program

Mr. Kevin Freels, District Operations

Goodloe Stadium Condition

Mr. Kevin Freels, District Operations

District Assessment and Capacity Study

Corgan

Red or Green Exercise – Facility Impressions

Corgan

Review of Transportation Services

Mr. Kevin Freels, District Operations

Appointment of Committee Co-Chairs

Mrs. Brenda Sanford

Next Meeting Information and Closing

Mrs. Brenda Sanford

Red Oak Independent School District



OUR VISION

Realize Our Individual Student's Dreams (ROISD)

OUR MISSION

To incorporate and instill the 4 Talons of the Hawk for each and every one of our students.

EXHIBITS ACADEMIC READINESS

- ♦ 1% better every day
- ♦ Loving Tough

SEEKS CHALLENGES OF LEARNING

- ♦ GRIT: Growth, Resilience, Integrity, Tenacity

FAIR, RESPECTFUL & WELL ROUNDED

- ♦ REACH: Respect, Encourage, Appreciate, Communicate, Honor

LEAVES A LEGACY THROUGH SERVICE

- ♦ We before Me

TABLE DISCUSSION

FACILITY TOURS



ROISD MAINTENANCE AND FACILITY SERVICES



MAINTENANCE AND FACILITY SERVICES

SUPPORT SERVICES



- **Maintenance**
- **Custodial**
- **Grounds**
- **Student Nutrition**
- **Transportation**

- **Continually monitor, assess, and maintain our facilities**

- **Limits of capabilities:**
 - **Finances**
 - **Knowledge and skills**
 - **Staffing**

Maintenance and Facility Services



| 2017 ROISD Growth Committee | |
|--|---|
| New Middle School | New Career and Technology Building at ROHS |
| New 1000 Student Middle School | New CTE Building at ROHS |
| OR:Renovate Bldg on Live Oak to Middle School | |
| Base Renovations at Bldg on Live Oak | |
| | Renovations |
| Classroom Revolution | Fire Suppression/Roof-6GC, ROMS, and LHLC |
| Revolution Technology, Teacher Furniture, and ROHS LC | Roof Replacements-ESC |
| PLUS:Elementary Student Furniture | Replace Gym Floor-RPS |
| PLUS:Backup Storage/Generator | Roads/Parking - RPS |
| PLUS:Furniture @ ROHS | |
| PLUS:Additional Secondary Student Devices | HVAC |
| PLUS: Switch Replacements | EE, RPS, HAW, ROMS |
| | |
| Safety and Security | Exterior/Parking/Lighting |
| Video Surveillance, Access Control, and Radio Upgrades | ROMS,ESC,Transportation |
| Police Vehicles Replacement/Addition | |
| | Transportation |
| Extra-Curricular | Parking,New Bay,Fuel Cover |
| Goodloe Stadium Improvements | |
| Practice Track, Turf, Storage at ROHS | IN PROGRESS |
| Roads/Parking-Goodloe Stadium | |
| | COMPLETED |

Maintenance and Facility Services

ROISD Facility Needs from 2019



C- Construction T - Technology M - Local Maintenance E-furniture, fixture or equipment purchase

| <u>Location</u> | <u>Request</u> | <u>Project</u> | <u>Rationale</u> | | |
|-----------------|----------------|---|------------------|---|-------------|
| CTE | Campus | Commercial restaurant kitchen | C | Provide Culinary & Restaurant management instruction | |
| CTE | CTE Dept. | Need Access Points in building to help with reception | T | Devices often slow or cannot connect easily to network | |
| DAEP | DAEP | area to stand | M | To keep students out of morning drive area | |
| DAEP | DAEP | additional space | C | To keep up with district enrollment and growing number of placements | Completed |
| DAEP | DAEP | Projector | T | Teachers need for instruction | |
| District Wide | Operations | Upgrade energy management system | C | efficiency, all facilities except DTS and ROHS expiring contract | |
| District Wide | Tech | Video Surveillance Cameras to IP | T | video resolution/quality ; all on Video Insights App- ROE and certain cameras | In Progress |
| District Wide | Tech | Schlage Door Access readers to Isonas | T | All readers on same system; Schlage systems are obsolete/end of life | |
| District Wide | Tech | Wireless Microphone Replacements | T | FCC required to stop using frequencies | |
| District Wide | Tech | Elementary Café Stage A-V-L Upgrades | T | benefit if we upgraded audio-visual-lighting on their cafeteria stages | |
| DTS | Maintenance | porcelain whiteboards in all classrooms | M | idea walls are in need of repairs | In Progress |
| DTS | Operations | replace marquee | M | replace from construction and tornado | In Progress |
| DTS | Operations | Playground Renovation | C | access issues new equipment | |

Since 2019

| <u>Location</u> | <u>Request</u> | <u>Project</u> | <u>Rationale</u> | | |
|-----------------|----------------|---|------------------|--|-----------|
| Ag Facility | Operations | New Ag facility | C | student projects | Completed |
| All Buildings | Maintenance | Lighting retro fit | C | ALL EXCEPT ROHS, RPS energy savings, service | |
| CTE Building | Operations | additional classroom space | C | student classrooms | Completed |
| CTE Building | Maintenance | HVAC upgrades | M | Due 2024 | |
| District Wide | Tech | Moving more systems to cloud (Exchange & Skyward) | T | this will enhance security | |

MAINTENANCE AND FACILITY SERVICES



HIGHLIGHTS FROM THE 2019 FACILITIES STUDY

- LHLC parking and road
- Technology – firewalls, generator, student devices
- Exterior lighting at ESC
- Lighting and extended parking at transportation
- Upgrades to video and access controls
- Netting at baseball and softball fields
- HVAC replacements at Schupmann and Wooden elementary schools

MAINTENANCE AND FACILITY SERVICES

HIGHLIGHTS SINCE THE 2019 FACILITIES STUDY



- Warehouse upgrades at ESC
- New Agricultural Science Project Center
- Upgraded Support Services for storage and security
- Lighting upgrades to LED at Red Oak High School and Schupmann Elementary
- Awnings at Red Oak Middle School to go to CTE Building
- Red Oak Middle School cafeteria sound system

MAINTENANCE AND FACILITY FUNDING



Use of different funding sources to maintain facilities

Maintenance Tax Note:

- Ten (10) new school busses
- Upgrade outdated HVAC systems
- Upgrade LED lights at HS and Schupmann
- HS practice facility upgrades and turf
- Replace MS cafeteria sound system
- Replace outdated staff technology

Sale of Live Oak Funds:

- Purchase of 22.5 acres (Hickory Creek)
- Purchase of 14.738 acres (Harmony Way)
- New Agricultural Science Project Center
- Upgrade to the existing maintenance facilities

ROISD M&O Funds:

- LHLC parking lot resurfacing
- Marquee signs at Shields and Schupmann
- ESC Roof Replacement
- CATE Building upgrades
- PAC audio system upgrade
- Furniture for new classrooms (PreK, Kindergarten and MS)

DISTRICT ASSESSMENT AND CAPACITY STUDY



WHAT IS INCLUDED IN A FACILITY ASSESSMENT?

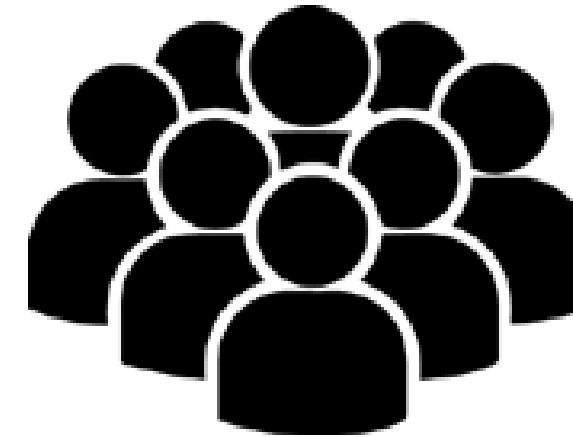


CONDITION ASSESSMENT

Architectural

Mechanical, Electrical &
Plumbing (MEP)

Technology



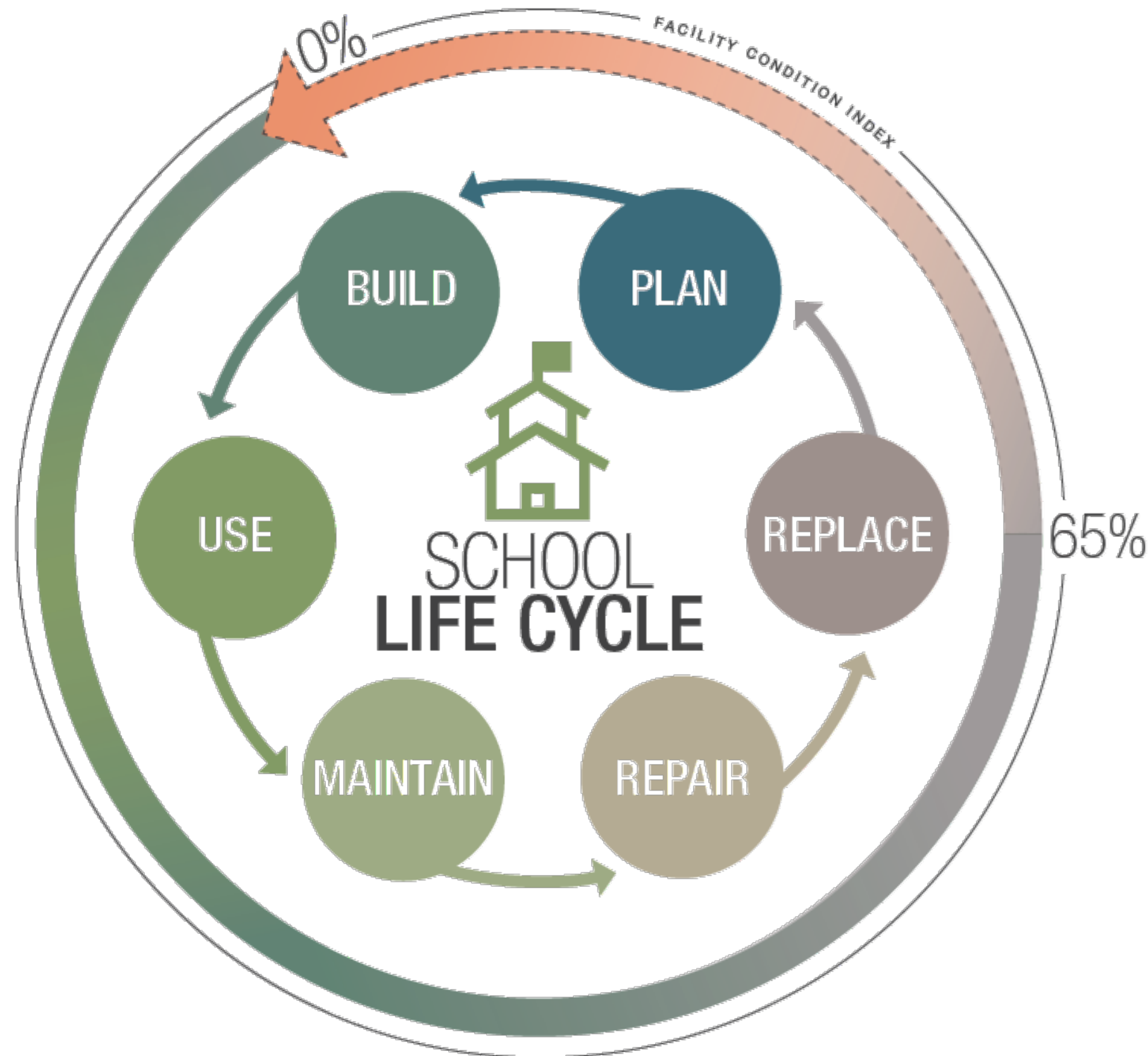
CAPACITY

Design

Functional

Utilization

WHY DO A FACILITY ASSESSMENT?



ROISD FACILITY ASSESSMENT REPORT



GENERAL INFORMATION

- **Included all 7 Campuses**
- **Included all 6 ROISD Support Facilities**
- **Included ROISD Staff Input**

- **ROISD Campus Average Age = 23.4 Years**

- **Last New Construction/Major Renovation**
 - **Shields Elementary - 2009; rebuild after tornado 2015**
 - **Red Oak High School - 2010**
 - **Red Oak Middle School Main Campus - 2010**
 - **Red Oak MS West Campus - 2014**
 - **ROHS Turf Practice Fields - 2019**
 - **Agricultural Science Project Center - 2020**

FACILITY ASSESSMENT

SHIELDS ELEMENTARY



- **Originally Constructed in 2009; Rebuilt in 2015 after tornado**
- **Play area around equipment and surfacing does not meet current ADA Code Standards**

FACILITY ASSESSMENT

EASTRIDGE ELEMENTARY SCHOOL



- **Constructed in 1993**
- **Some classrooms do not meet current TEA Standards for room size**
- **Fire alarm system lacks currently required Voice Evacuation System (Adopted by Fire Code in 2012)**
- **Play area and surfacing does not meet current ADA Code Standards**
- **Energy Management System is outdated lacks functionality and reliability**
- **Traffic patterns, flow is problematic**
- **Cafeteria location is problematic for adjacent classrooms**
- **Fire suppression system**

FACILITY ASSESSMENT

WOODEN ELEMENTARY SCHOOL



- **Constructed in 1999**
- **Some classrooms do not meet current TEA Standards for room size**
- **Fire alarm system lacks currently required Voice Evacuation System (Adopted by Fire Code in 2012)**
- **Play area and surfacing does not meet current ADA Code Standards**
- **Energy Management System is outdated lacks functionality and reliability**
- **Traffic patterns, flow is problematic**
- **Cafeteria location is problematic for adjacent classrooms**

FACILITY ASSESSMENT

RED OAK ELEMENTARY SCHOOL



- **Constructed in 2005**
- **Most classrooms do not meet current TEA Standards for room size**
- **Fire alarm system lacks currently required Voice Evacuation System (Adopted by Fire Code in 2012)**
- **Play area and surfacing does not meet current ADA Code Standards**
- **Energy Management System is outdated lacks functionality and reliability**
- **Traffic patterns, flow is problematic**

FACILITY ASSESSMENT

SCHUPMANN ELEMENTARY SCHOOL



- **Constructed in 2001**
- **Some classrooms do not meet current TEA Standards for room size**
- **Fire alarm system lacks currently required Voice Evacuation System (Adopted by Fire Code in 2012)**
- **Play area and surfacing does not meet current ADA Code Standards**
- **Energy Management System is outdated lacks functionality and reliability**
- **Originally built as an intermediate school and converted to PK-5 in 2015**
- **Some current rooms in the school are larger or inefficient in use due to being sized for an intermediate school (i.e. choral, science rooms, etc.)**

FACILITY ASSESSMENT

RED OAK MIDDLE SCHOOL – WEST CAMPUS



- **Constructed in 1974 with additions in 1981, 1985, 1999 and 2014**
- **Many classrooms do not meet current TEA Standards for room size**
- **Fire alarm system lacks currently required Voice Evacuation System (Adopted by Fire Code in 2012)**
- **Energy Management System is outdated lacks functionality and reliability**
- **Multiple detached buildings on campus create security risks**

FACILITY ASSESSMENT

RED OAK MIDDLE SCHOOL



- **Constructed in 1976; renovations, additions in 1986, 1993, 1996, 1997, 2004, and 2010**
- **Some classrooms do not meet current TEA Standards for room size**
- **Fire Alarm system lacks currently required Voice Evacuation System (Adopted by Fire Code in 2012)**
- **Energy Management System is outdated lacks functionality and reliability**
- **Parking areas lack security lighting**
- **Campus has multiple detached buildings that create security issues**
- **Traffic flow on street is problematic**
- **Fire suppression system**

FACILITY ASSESSMENT

RED OAK CAREER TECH BUILDING



- **Constructed in 2004**
- **High school students are required to be transported to facility.**
- **Fire Alarm system lacks currently required Voice Evacuation System (Adopted by Fire Code in 2012)**
- **No Energy Management System at the facility**
- **Parking areas lack security lighting**
- **Traffic flow is problematic**

FACILITY ASSESSMENT

RED OAK HIGH SCHOOL



- **Constructed in 2010**
- **Many CTE programs are located at the CTE facility off campus**
- **Additional practice gym space is needed**
- **Track is located at the stadium site**

FACILITY ASSESSMENT

ROISD EDUCATIONAL SERVICE CENTER



- **Constructed in 1963 as the original Red Oak Elementary – fully renovated in 2013 by ROISD Maintenance staff**
- **Fire Alarm system lacks currently required Voice Evacuation System (Adopted by Fire Code in 2012)**
- **No Energy Management System at the facility**
- **Parking and circulation drive are insufficient for larger events and training**
- **Exterior lighting needed at building and parking areas**

FACILITY ASSESSMENT OVERVIEW



- **Facilities are well maintained**
- **All ES playgrounds need updating**
- **Fire Alarms need updating at many campuses**
- **Energy Management Systems need updating throughout District**
- **Parking and circulation drives need improvement at many Campuses**
- **Exterior security and parking lighting need improvement at many campuses**
- **Roofs are in good condition throughout District**
- **Technology is in good condition throughout District**

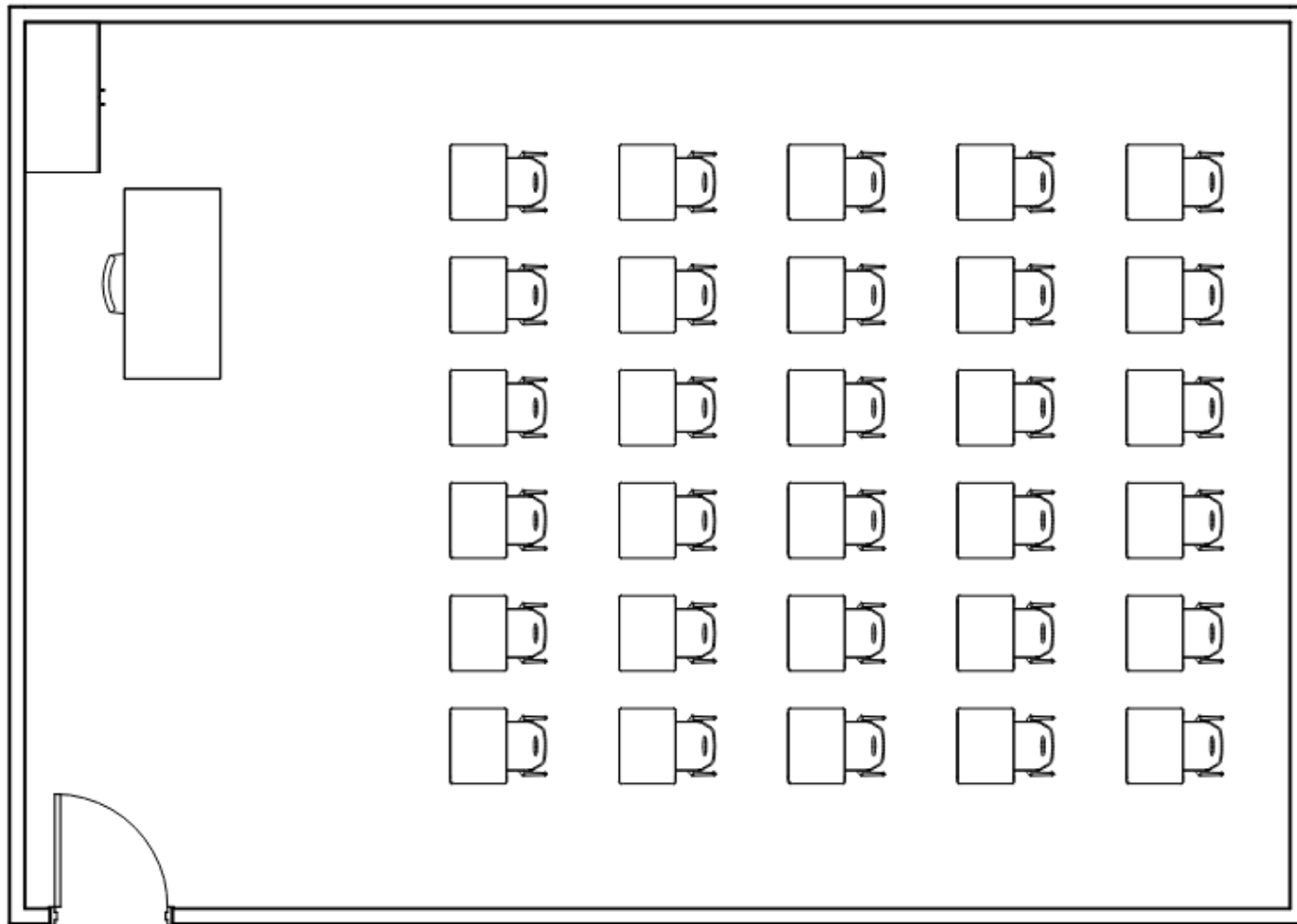
ROISD FACILITY STUDENT CAPACITY



PROCESS

- **Updated Campus Floor Plans**
- **Received principal input in 2019 regarding current utilization**
 - **Detailed campus reports include a schedule of rooms used as instructional spaces**
 - **Identification of vacant classrooms, classrooms currently used for storage and administrative functions**
 - **Room name, function, area, and design capacity**

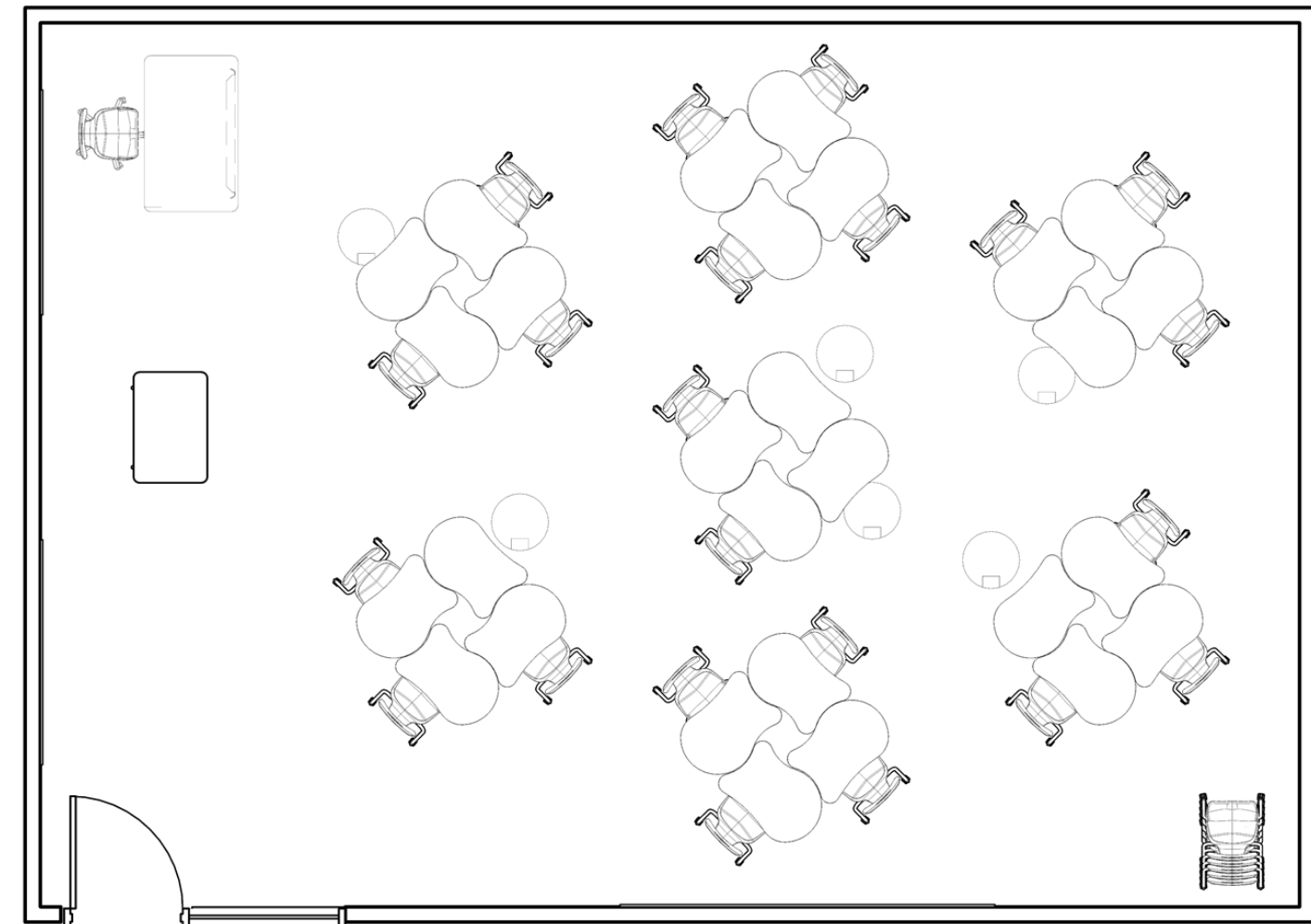
CAPACITIES DEFINED



DESIGN CAPACITY

100%

Maximum per Code and TEA

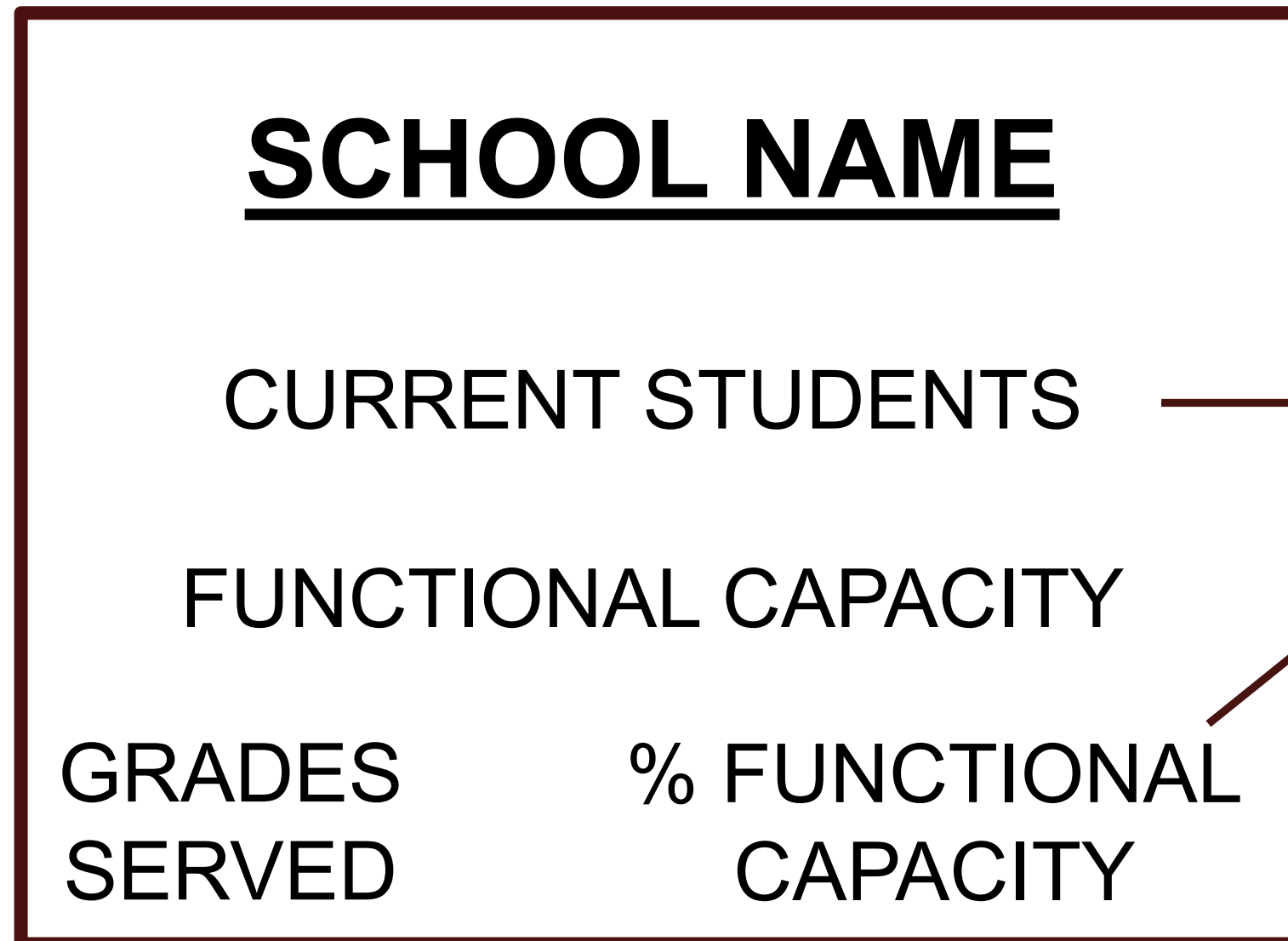


FUNCTIONAL CAPACITY

90%

How the room is actually used
and scheduled

CAPACITY STUDY LEGEND



Red numbers indicate a facility that is over its functional capacity.

ROISD CURRENT ATTENDANCE

AS OF 11-06-2021



| | | |
|----------------------------|------|-----|
| <u>RED OAK HIGH SCHOOL</u> | | |
| | 2033 | |
| 9-12 | 2165 | 94% |

| | | |
|------------------------------|------|------|
| <u>RED OAK MIDDLE SCHOOL</u> | | |
| | 1578 | |
| 6-8 | 1034 | 152% |

| | | |
|-------------------|-----|-----|
| <u>DT SHIELDS</u> | | |
| | 559 | |
| PK-5 | 607 | 92% |

| | | |
|------------------|-----|-----|
| <u>EASTRIDGE</u> | | |
| | 481 | |
| PK-5 | 504 | 95% |

| | | |
|---------------|-----|-----|
| <u>WOODEN</u> | | |
| | 505 | |
| PK-5 | 576 | 88% |

| | | |
|--------------|-----|------|
| <u>ROE *</u> | | |
| | 544 | |
| PK-5 | 537 | 101% |

| | | |
|------------------|-----|-----|
| <u>SCHUPMANN</u> | | |
| | 614 | |
| PK-5 | 760 | 81% |

POTENTIAL RESOLUTIONS

TO CAPACITY ISSUES

- **Change and/or relocate current space utilization**
- **Add new classrooms or portables**
- **Change attendance boundaries**



TRANSPORTATION SERVICES



ORIGINAL TRANSPORTATION FACILITY



- Originally constructed in 2001 to service 20 buses
- Contracted maintenance on 'white fleet'
- Bus parking is unpaved
- Two (2) single restrooms



CURRENT CONDITIONS

- Now serves more than 60 buses and 50 'white fleet' vehicles
- Facility lot floods
- Bus parking is unpaved
- Space is inadequate for the number of personnel, bus drivers
- No space for safety meetings or training
- Two (2) single restrooms shared by 60 staff
- Insufficient parts storage and maintenance bay capacity for number of buses
- Fuel storage capacity is insufficient for the number of vehicles
- Inadequate lighting levels for maintenance and servicing vehicles
- No fleet washing system in place



TRANSPORTATION FACTS



- **System runs on three tiers**
 - Elementary – 34 routes
 - Middle School – 27 routes
 - High School – 31 routes
- **Ridership**
 - 2015-2016 – 2,769 riders per day, on average
 - 2021-2022 – 3,846 riders per day, on average
- **Coverage area has increased significantly with the new developments across the District**
 - First 48 days of the school year:
 - 2015-2016 102,000 miles driven
 - 2021-2022 121,000 miles driven

ROISD CAREER TECHNICAL EDUCATION (CTE) PROGRAMS



CAREER & TECHNOLOGY EDUCATION



- **Personal pathway of learning chosen by the student**
- **Academically prepares students for the rigors of college**
- **Technically prepares students for a career through real world job experiences**
- **Students can earn industry-recognized certifications**
- **Supports workforce and economic development within a community**

ROISD CTE OVERVIEW



- **101 Courses – 34 are dual credit through TSTC or Navarro**
- **36 Industry Certifications opportunities**
- **21 full-time and 3 part-time instructors**
- **Classes are held at two locations**
 - 20 classroom spaces are utilized within Red Oak High School
 - 11 classroom spaces are utilized within the CTE Building
- **Nearly 600 students are bused every day to the CTE Building (5 minutes for one-way travel)**
- **Three (3) buses are required to transport students every period**
- **Time lost due to transportation is instructional time lost**

CURRENT ROISD CTE PATHWAYS



- Agriculture
- Architecture & Construction
- Arts
- A/V Technology
- Business Management & Administration
- Education & Training
- Finance
- Health Science
- Human Services
- Information Technology
- Law Public Safety, Corrections & Security
- Science, Technology, Engineering & Mathematics
- Transportation, Distribution & Logistics

ROISD CTE - Programs of Study 1



- Animal Science
- Applied Agriculture Engineering
- Architectural Design
- Carpentry
- Electrical
- Advanced Manufacturing and Machinery Mechanics
- Dual Credit Welding (TSTC)
- PLTW Engineering
- Dual Credit Automotive (TSTC)
- Dual Credit Diesel and Heavy Equipment (TSTC)



ROISD CTE - Programs of Study 2



- Health Diagnostics
- Healthcare Therapeutic
- Dual Credit Health Informatics (TSTC)
- Family and Community Services
- Cosmetology
- Teaching and Learning
- Dual Credit Law Enforcement (Navarro)
- Emergency Services



ROISD CTE - Programs of Study 3



- Accounting and Financial Services
- Business Management
- Entrepreneurship
- Cybersecurity
- Design & Multimedia Arts
- Digital Communications
- Programming and Software Development
- Networking Systems
- Web Development



ROISD CTE DEVELOPMENT



- **New Agricultural Science Project Center built and opened in 2020 – funded by ROISD Maintenance and Operations (M&O) savings**
- **Fall review of CTE programs for course catalog – review of program interest and participation, as well as other opportunities:**
 - Insurance Operations and CISR Certification
 - Health Science expansion into dental assistant and dental hygienist pathways
 - Introductions to Culinary Arts, include ServSafe Certification
 - Build additional pathways for special need student populations

Playgrounds, Physical Education and Extra-Curricular Facilities



ELEMENTARY SCHOOLS



- All elementary playgrounds lack ADA accessibility, which includes access, sidewalks, slope, and curb ramps
- Many structures have parts that can no longer be replaced due to age
- Increased number of students using the equipment than when originally constructed
- Equity throughout District



RED OAK MIDDLE SCHOOL



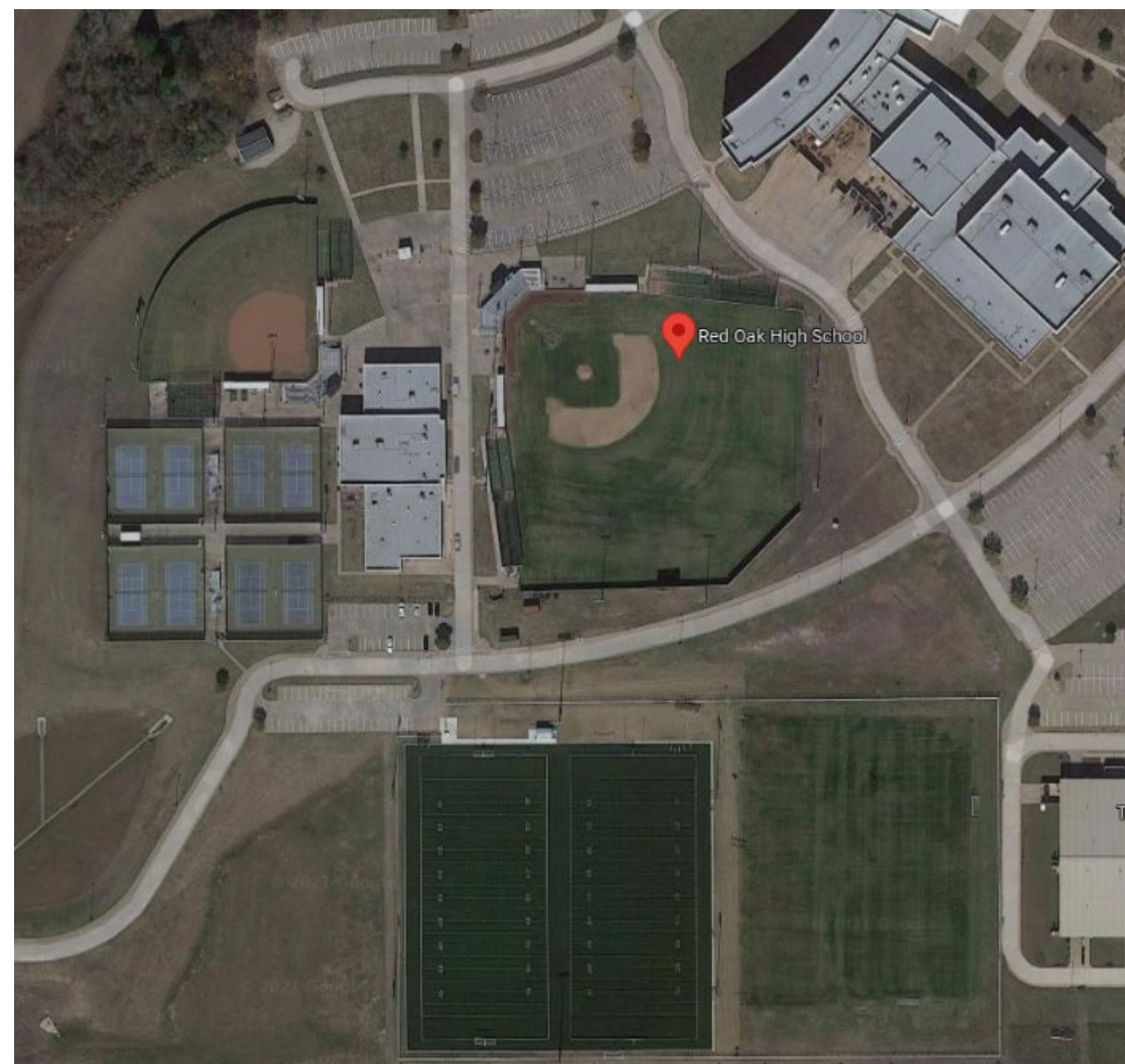
- **PE Changing Rooms**
- **Gym Upgrades**
 - Lighting
 - Scoreboards
- **Band Hall**
 - Size relative to student participants
 - Storage - GYM



RED OAK HIGH SCHOOL



- **Current gymnasium space is insufficient**
- **Tennis court surfacing has reached the end of its useful life expectancy**
- **There is no track at the high school so students must be transported daily**
- **Grass baseball and softball fields require extended maintenance and are unable to be used after rains**
- **New turf fields and lights were installed in 2019**



ADDITIONAL INFORMATION



- **Gym provides additional indoor space**
 - **Band/Color Guard**
 - **HS - 133 (9-12) MS – 259 (6-8)**
 - **Drill Team**
 - **HS – 53 (9-12) MS – 36 (7-8)**
 - **Events – i.e. testing, organizational activities**
 - **Athletics – number of teams, calendar overlaps VB and BB**
 - **2021-22 HS – 701 MS – 455**
- **Alleviate academic scheduling concerns (fine arts vs. athletics vs. PE)**
- **Only track in ROISD at Goodloe - Spring 7th G/B, 8th G/B, JV G/B and V G/B (125 plus)**
 - **Alleviate travel**

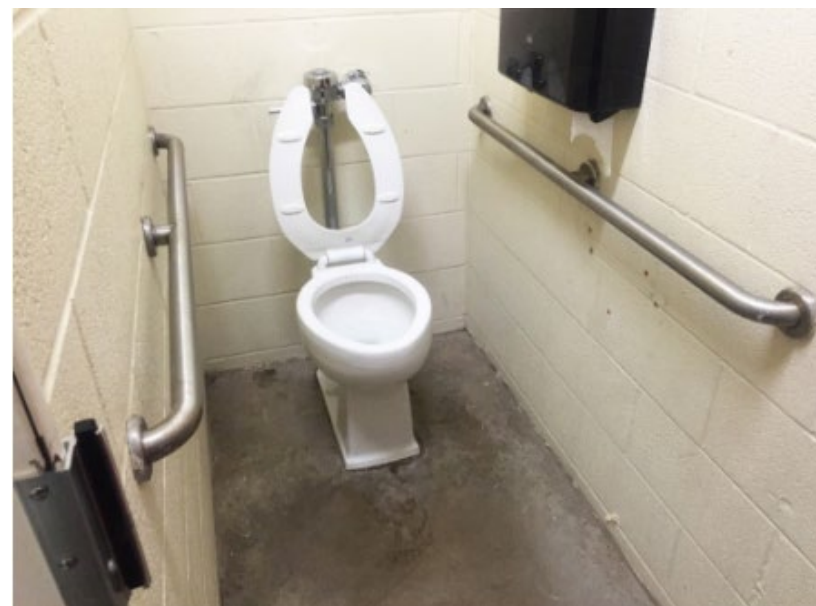
GOODLOE STADIUM ASSESSMENT



GOODLOE STADIUM CONDITIONS



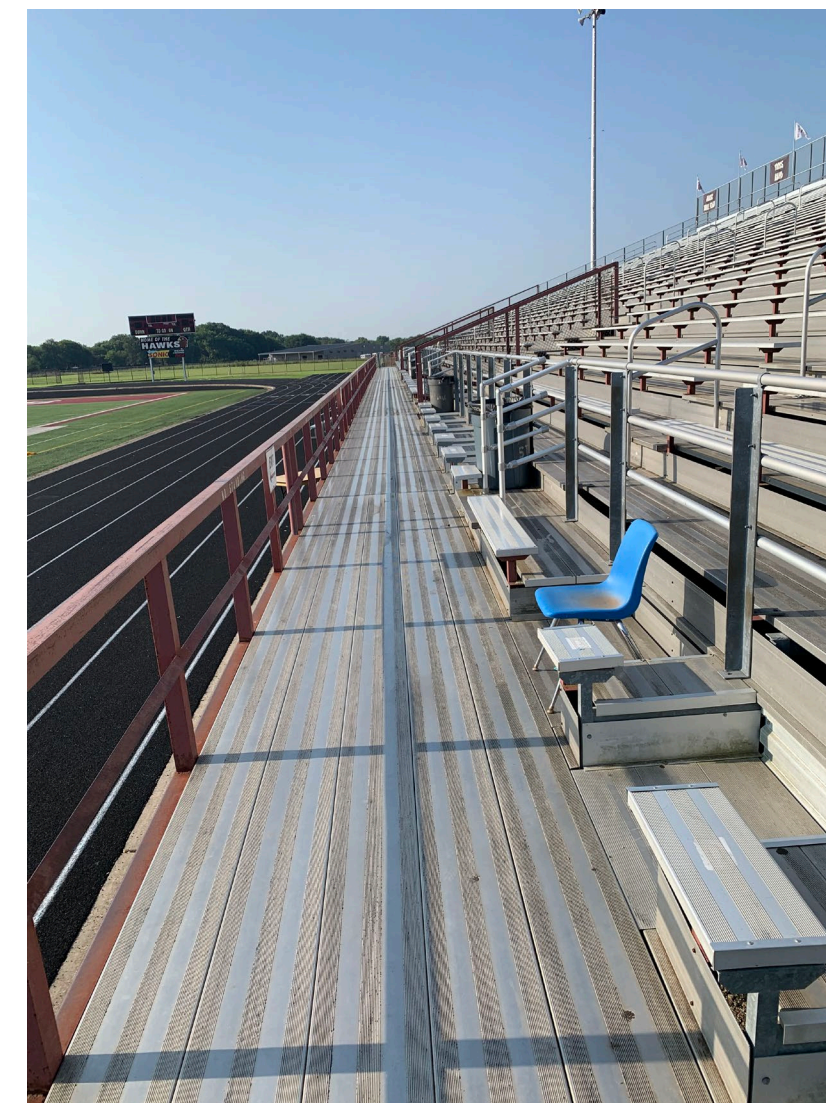
- **Current facility does not meet ADA Standards for parking, walkway access, plumbing fixtures, bathrooms, concessions and seating**
- **Concessions are not adequately sized**
- **Toilet fixture counts are well below Code minimum and are not located along an accessible route.**
- **Visitor/Home parking and roads are inadequate and inefficient**



CURRENT CONDITIONS



- Track needs to be re-surfaced
- No designated bus parking
- Scoreboard age does not allow for updating
- Sound/PA system needs updating
- Lighting and poles are adequate, but aging and not LED (inefficient)



ADDITIONAL INFORMATION



- **45 plus dates of use at the stadium**
 - **MS and HS Football, HS G/B Soccer, track meets**
- **Unfavorable image of ROISD - Goodloe Stadium is a representation of ROISD to visiting school districts and communities**
- **Current track is only 7 lanes, 8 is competition tracks**
 - **Limits track team participation at meets**
 - **Limits our ability to host district or area-level competition**
- **Soccer games create issues with track practice**

RED or GREEN EXERCISE

DISTRICT FACILITY
IMPRESSIONS



Question #1



- Did you know the middle school current conditions and student population?

Question #2



- Did you know about all of ROISD's CTE Programs and how students are taught?

Question #3



- Did you know about the elementary school's playgrounds?

Question #4



- Did you know about the conditions at the Transportation Facility?

Question #5



- From the Assessment, do you think that ROISD has some major facility issues?

APPOINTMENT OF COMMITTEE CO-CHAIRS



APPOINTMENT OF CO-CHAIRS



Role of Committee Co-Chairpersons

Work closely with Mrs. Sanford and Red Oak ISD Administration

Be ROISD's main contacts to the CFPC

Keep the CFPC informed regarding meetings and events

Citizen Leadership at CFPC meetings

FUTURE MEETINGS



FUTURE MEETINGS

All Regular Meetings begin at 6:15 pm and end by 8:00 pm
Food Served from 5:45 to 6:15 pm



TUESDAY, NOVEMBER 30 at 6:15pm

Red Oak High School - Library

TUESDAY, DECEMBER 14 at 6:15pm

Red Oak Middle School - Library

TUESDAY, JANUARY 4 at 6:15pm

CTE Building at Red Oak M.S.

TBD

CFPC to Present Recommendations
to the School Board